

**Sarah Middleton  
Chief Executive  
Black Country Consortium Ltd**

# Contents

- Local Economies
- LEPs - Overview
- Governance
- Strategy
- Delivery
- Investment
- Cross LEP Collaboration
- Local Industrial Strategy

# Economy

## Black Country



**Population** is increasing and stands at 1.19m  
+0.8% growth compared to 0.6% nationally



Resident **Wages** are increasing and stand on average at £25,505 in 2018  
+2.8% growth compared to 2.7% nationally  
(2017-2018)



The number of **Jobs** has increased to 463,000  
+4.0% compared to +1.3 nationally  
+116,280 jobs required to reach target



The **Employment Rate** is 68.3% (Jan 2017- Dec 2017)  
+48,895 people required to be employed to reach national average



The proportion of Working Age Population with **No Qualifications** is decreasing at a faster rate than England, but 57,308 people still require upskilling

## Sandwell



**Population** is increasing and stands at 325,460  
+0.9% growth in Sandwell compared to 0.6% nationally



Resident **Wages** are increasing and stand at £24,573 in 2018  
+3.1% growth compared to 2.7% nationally  
(2017-2018)



The number of **Jobs** has increased to 133,000  
+2.3 % compared to +1.3 nationally  
+27,080 jobs required to reach target



The **Employment Rate** is 64.3% (Jan 2017 – Dec 2017)  
+21,701 people required to be employed to reach national average



The proportion of Working Age Population with **No Qualifications** is decreasing at a faster rate than England, but 26,785 people still require upskilling

# Economy

Black Country Consortium

Economic Intelligence Unit

## Black Country



**GVA is increasing** and stands at **£21.7bn**  
**+4.3% growth** compared to **+3.5% nationally**  
(2016 – 2017)



**GVA per Head** is **£18,294**  
**+3.5% growth** compared to **2.9% nationally**  
(2016-2017)  
But with a **shortfall of £9,802** to national average



**+2,520** net new **Homes** built in 2017  
**+34,350** net new homes to be built to reach  
2026 target



**5,240 Enterprise Births**  
- 655 enterprise births compared to 2016  
**1,997 enterprise births** P.A required to reach  
national level



The number of **Apprenticeships** is **decreasing in**  
**the Black Country**  
**Additional 13,580 apprenticeships** required to  
reach 2033 target

## Sandwell



**GVA is increasing** and stands at **£6.3bn**  
**+1.9% growth** compared to **+3.5% nationally**  
(2016 – 2017)



**GVA per Head** is **£19,365**  
**+1.0% growth** compared to **2.9% nationally**  
(2016 - 2017)  
But with a **shortfall of £8,731** to national average



**+880** net new **Homes** built in 2017  
**+12,879** new homes to be built to reach target



**1,490 Enterprise Births** in 2017  
- 150 enterprise births compared to 2016  
**+ 496 enterprise births** P.A required



The number of **Apprenticeships** is **decreasing**  
**in Sandwell**  
**-1,310 apprenticeships** starts compared to  
2016/17

# Local Enterprise Partnerships (LEPs)

- Established in 2011 – (BEIS, DCLG, Cities and Growth Unit).
- 38 Voluntary **partnerships**.
- Local business leaders and local authorities
- Focus **local** economic priorities.
- A vital role in supporting businesses and innovation.
- Skills – Infrastructure Place Making – Business Competitiveness.
- Influencing role e.g. PM LEP Council

# Black Country LEP



- Consortium – Secretariat to the BCLEP.
- Private Sector BC LEP Chair – Stewart Towe
- 16 Member Board including 10 private sector, LA Leaders, HE, FE
- Role of Board Champions.
- Annual Conversation outcome - 5<sup>th</sup> LEP in England

# Black Country LEP - Governance

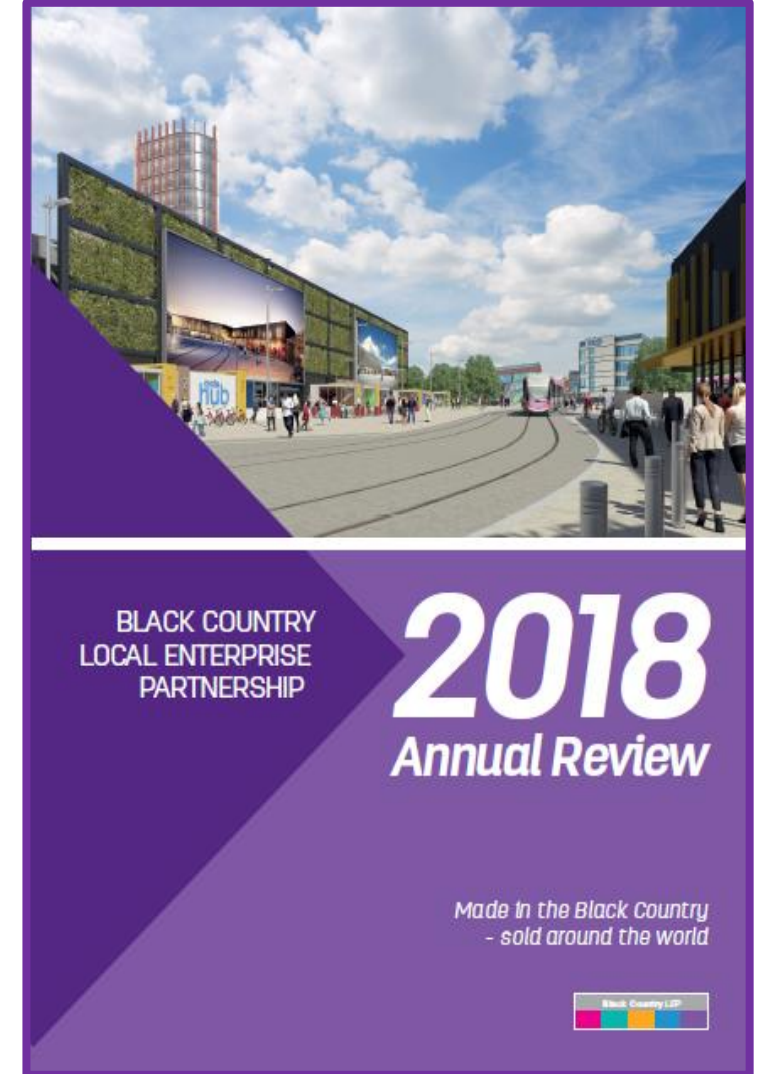


- Black Country Joint Committee
  - Accountable Bodies
- Black Country Advisory Board
- Black Country LEP
- Black Country Consortium Ltd
  - Guarantee Members – Black Country Leaders.
- Annual Conversation BCLEP - Exceptional Governance rating



# Black Country Strategy

Black Country LEP





# Strategy into Delivery – An Evidence Based Approach

Black Country LEP

## Our Ambitions - Black Country Strategic Economic Plan – Black Country PMF

Annual Economic Review Report – sets out our key measures of success in the Black Country Performance Management Framework

### Delivering the Ambitions

12 Strategic Programmes covering 3 themes of People, Place and Business

### Thematic & Sectoral Approach – Black Country Propositions

\* 4 priorities areas for proposition development: High Value Manufacturing City; Black Country as Garden City; Fit for Purpose Skills System; Transport Infrastructure

- Sector Plans - 5 Transformational & 5
- ❖ 5 Enabling Sectors

### Spatial Approach – Spatial Opportunities

In depth analysis of pipeline opportunities in 11 identified spatial zones and the areas that are outside and serving with an integrated cross boundary BC Core Strategy.

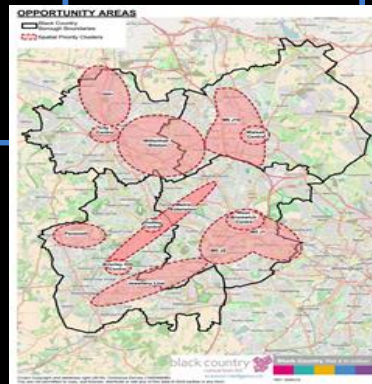
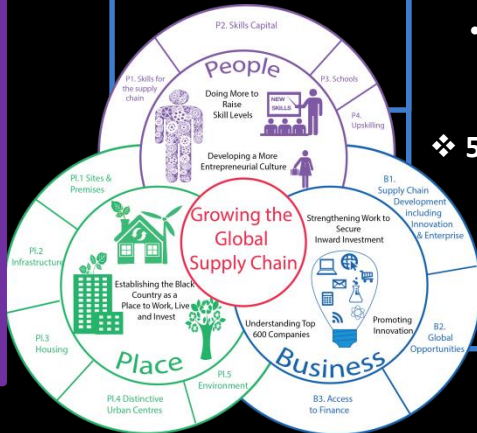
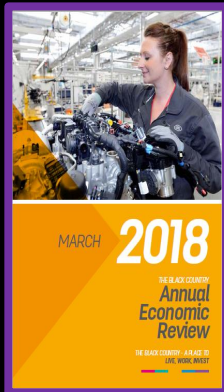
### Programme Dashboards

Detailed programme dashboards including:

- ❖ Overall Priority Pipeline
- ❖ Growth Funds
- ❖ Land Remediation Fund (WMCA)
- ❖ Broadband

### Sites Details

‘Estate Agent’ details are available for each of our pipeline sites, accessible via our online mapping tool, linking to Midlands Engine and WMCA Investment Prospectuses



# Black Country Priority Propositions

## HVM CITY

Accelerate the growth of high value manufacturing businesses, inc. action to improve the quality of existing employment locations.



## ECONOMIC CAPITAL

Seek maximum economic benefit from our strategic centres and ensure that they contribute to the attractiveness of the Black Country as a place to live, work, visit & invest.



## SKILLS FOR BUSINESS, SKILLS FOR LIFE

Ensure that our skills system can meet the needs of businesses and enable residents to benefit from growth



## BUSINESS COMPETITIVENESS

Strengthen our business base by creating the conditions for higher levels of business birth, growth and survival and to enable businesses to improve their productivity and competitiveness.



## GARDEN CITY

Accelerate house building and improve our housing mix by treating our supply of brownfield land as an opportunity for placeshaping and the creation of sustainable communities



## CONNECTED BLACK COUNTRY

Investment in broadband and transport to support growth by enabling the movement of goods and people.



**BLACK COUNTRY  
STRATEGIC ECONOMIC  
PLAN**



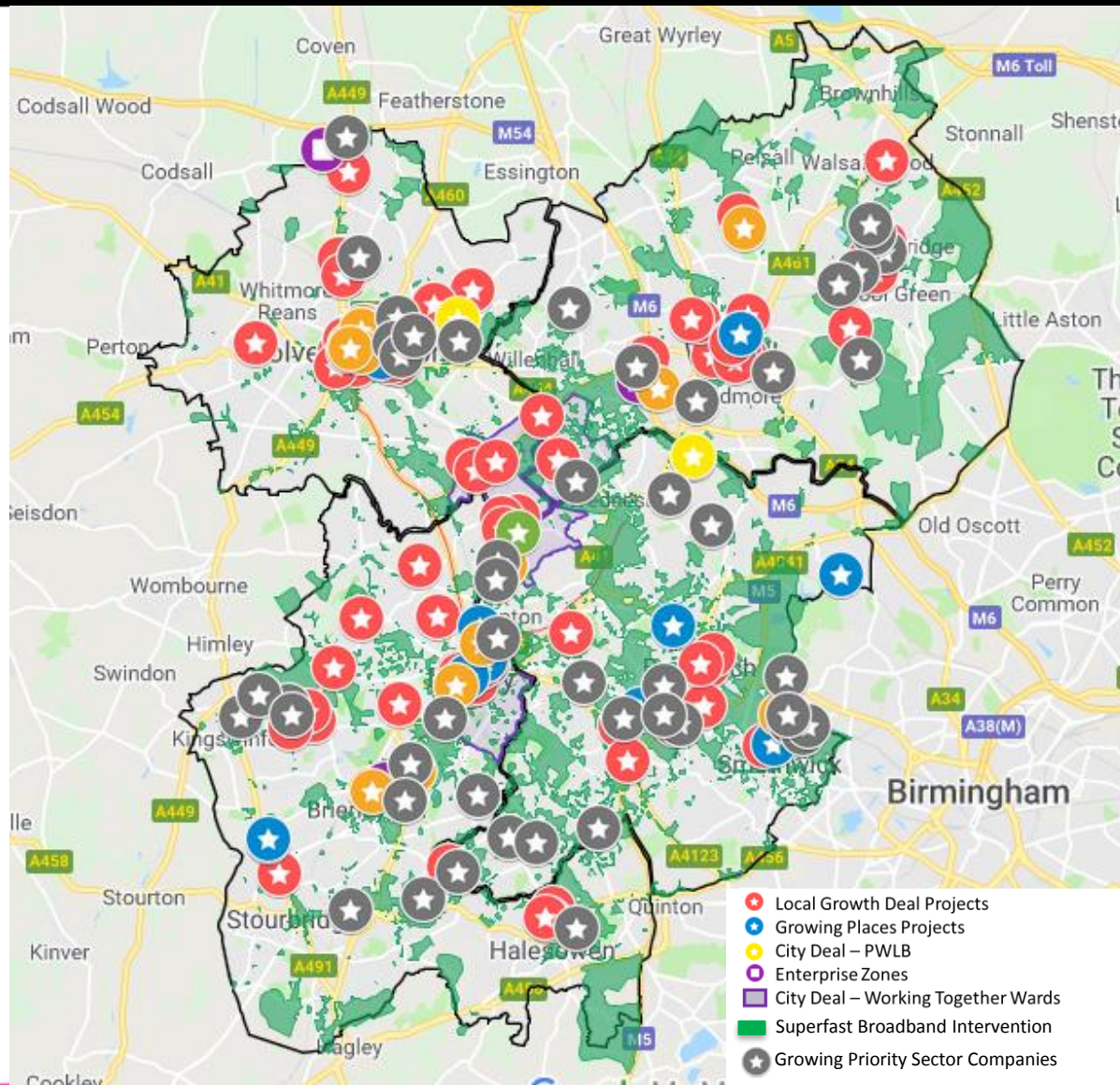
# Delivery

Black Country LEP

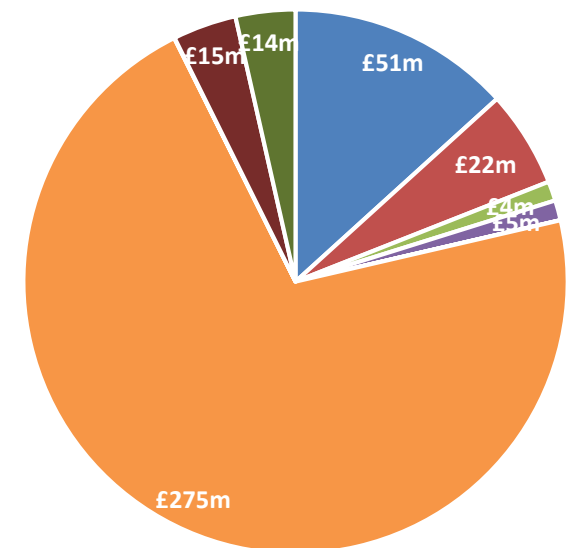




# Black Country LEP - Governance



Total Investment by Funding Streams in Sandwell



- Growth Deal
- Growing Places
- City Deal
- Broadband
- Sports
- Transport (not including Growth Deal)
- Land and Property Investment Fund
- Growing Priority Sectors
- WMCA Collective Investment Fund

# Regeneration Corridor Pipeline

Black Country LEP

## Future Pipeline

### Strategic Centres

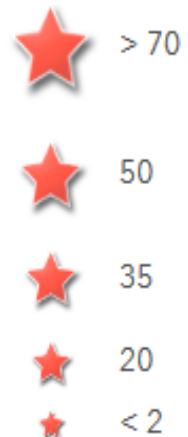


### Regeneration Corridors



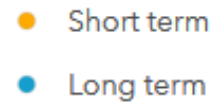
BC High Quality  
Employment Sites Pipeline

Hectares

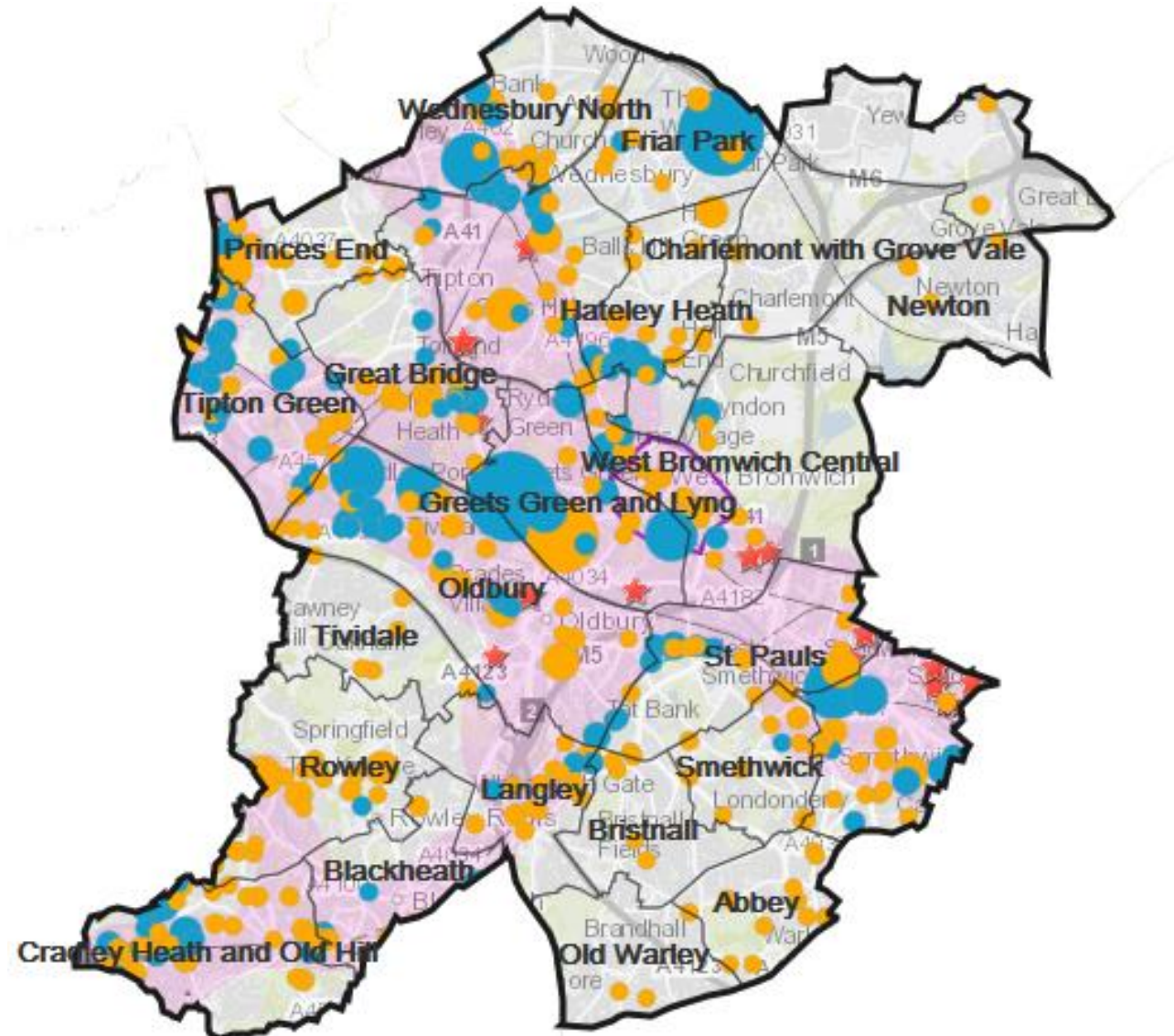


Sandwell Housing Pipeline

Status



Capacity



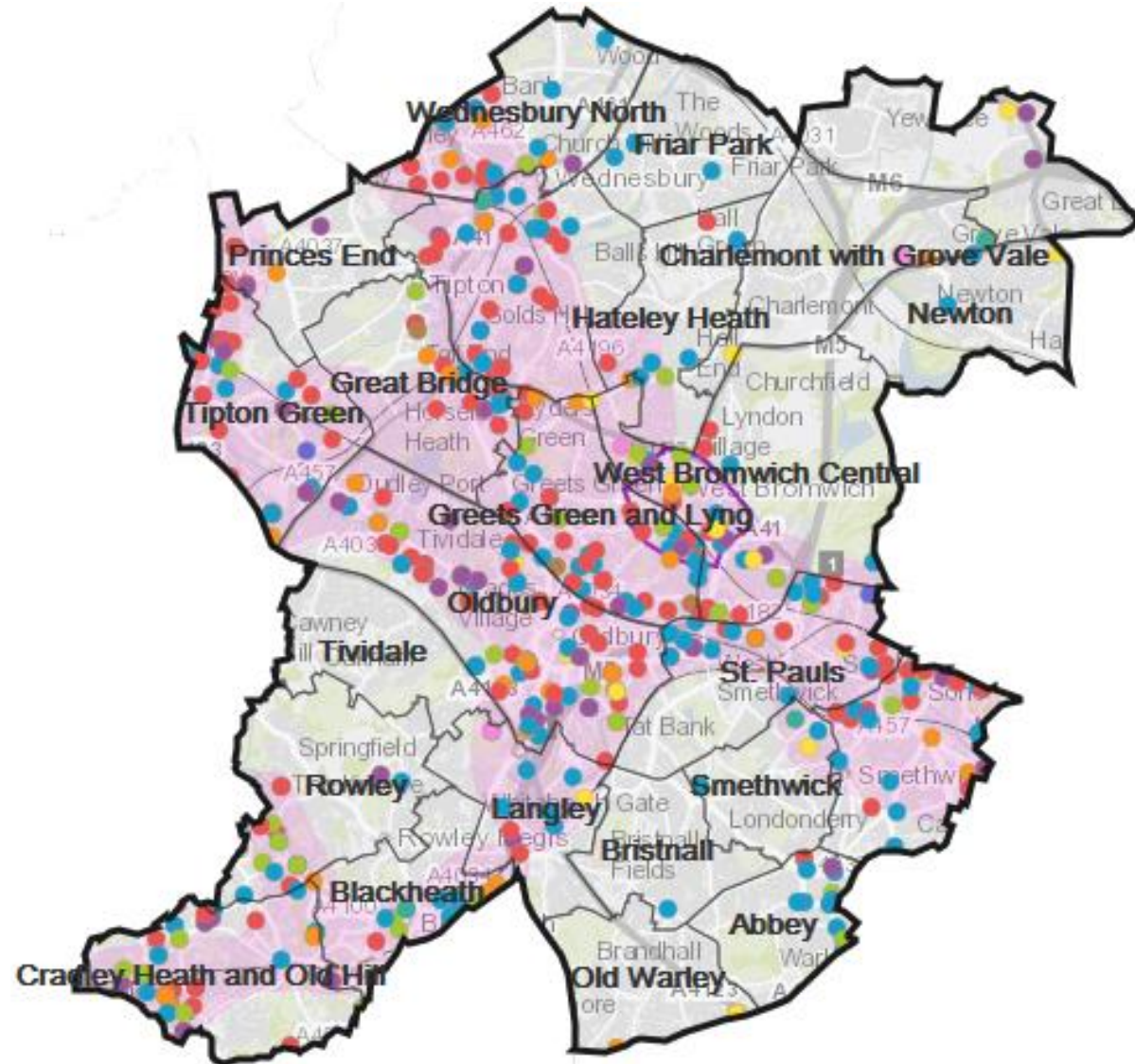


# Strategic Companies

Black Country LEP

## Strategic Companies

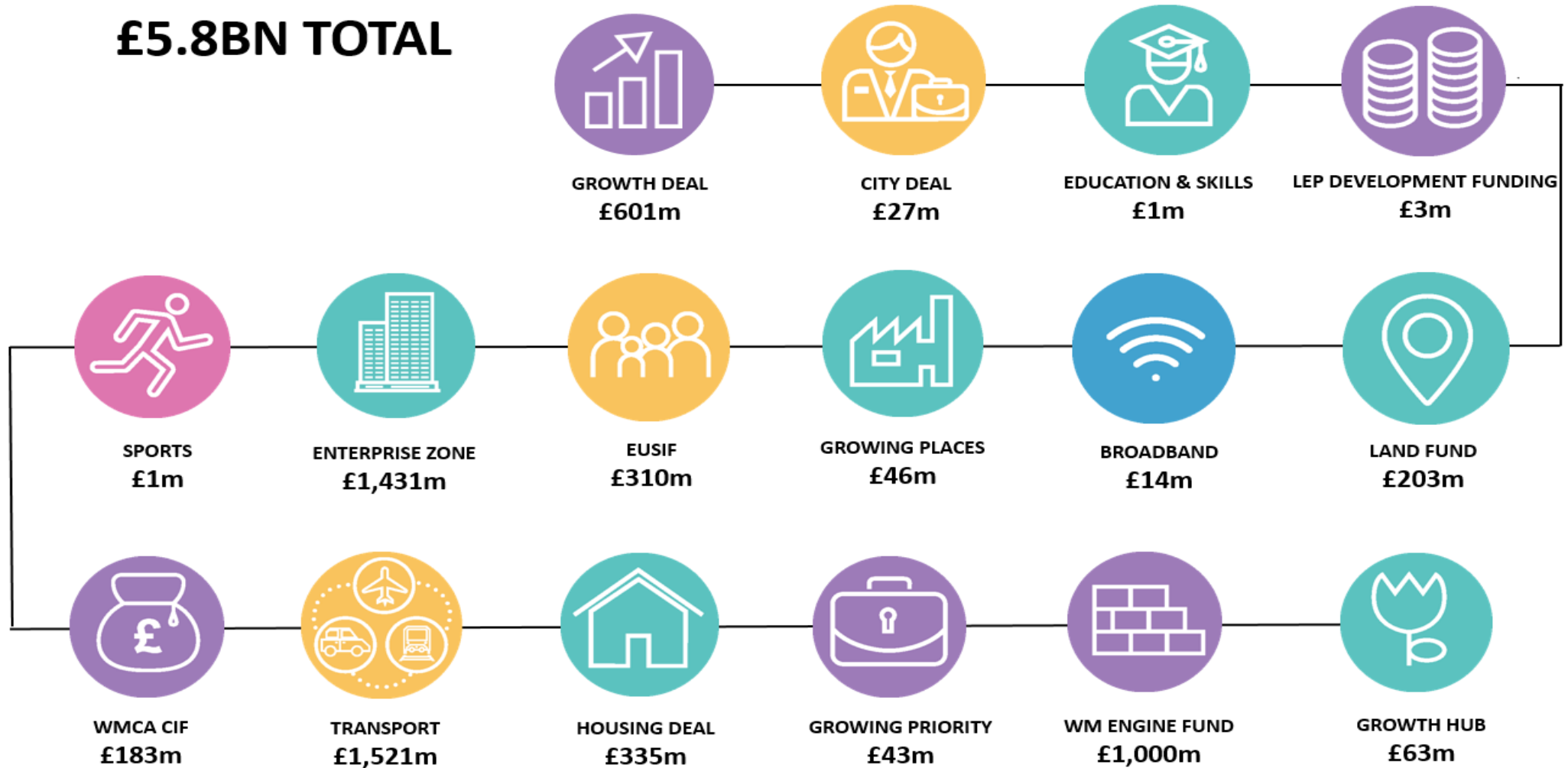
- Advanced Manufacturing
- Retail
- Business Services
- Building Technologies
- Transport Technologies
- Health
- Visitor Economy
- Environmental Technologies
- Public Sector
- Sports



# SEP Investment

Black Country LEP

## BLACK COUNTRY SEP INVESTMENT £5.8BN TOTAL

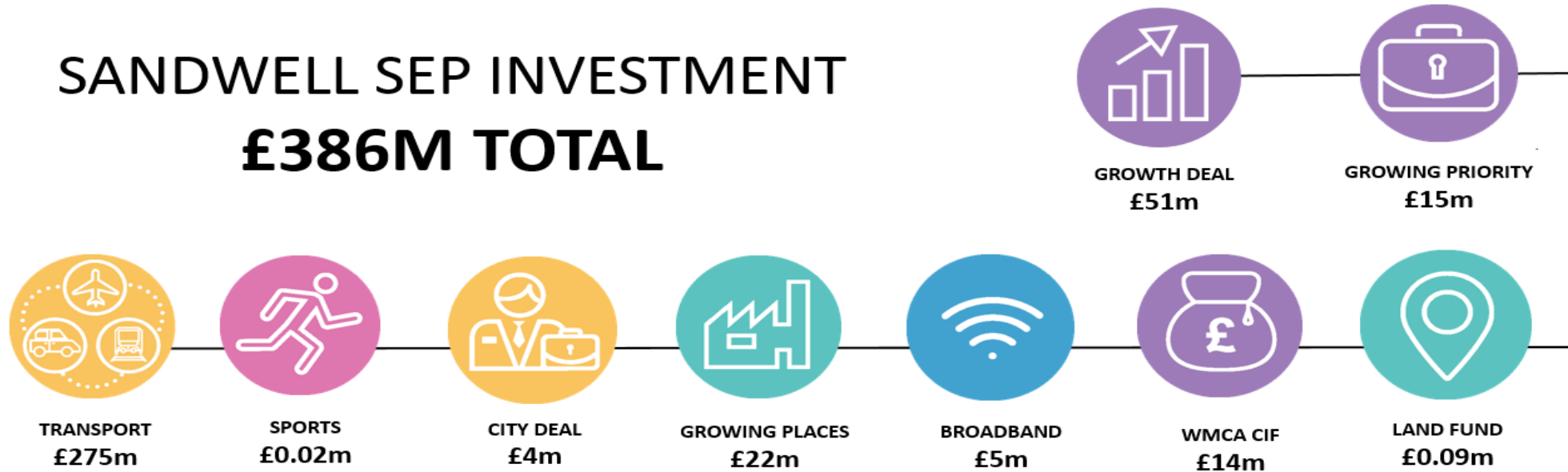




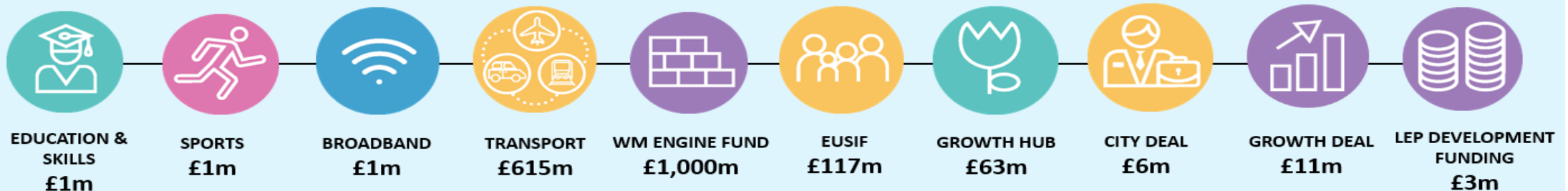
# SEP Investment

Black Country LEP

## SANDWELL SEP INVESTMENT £386M TOTAL

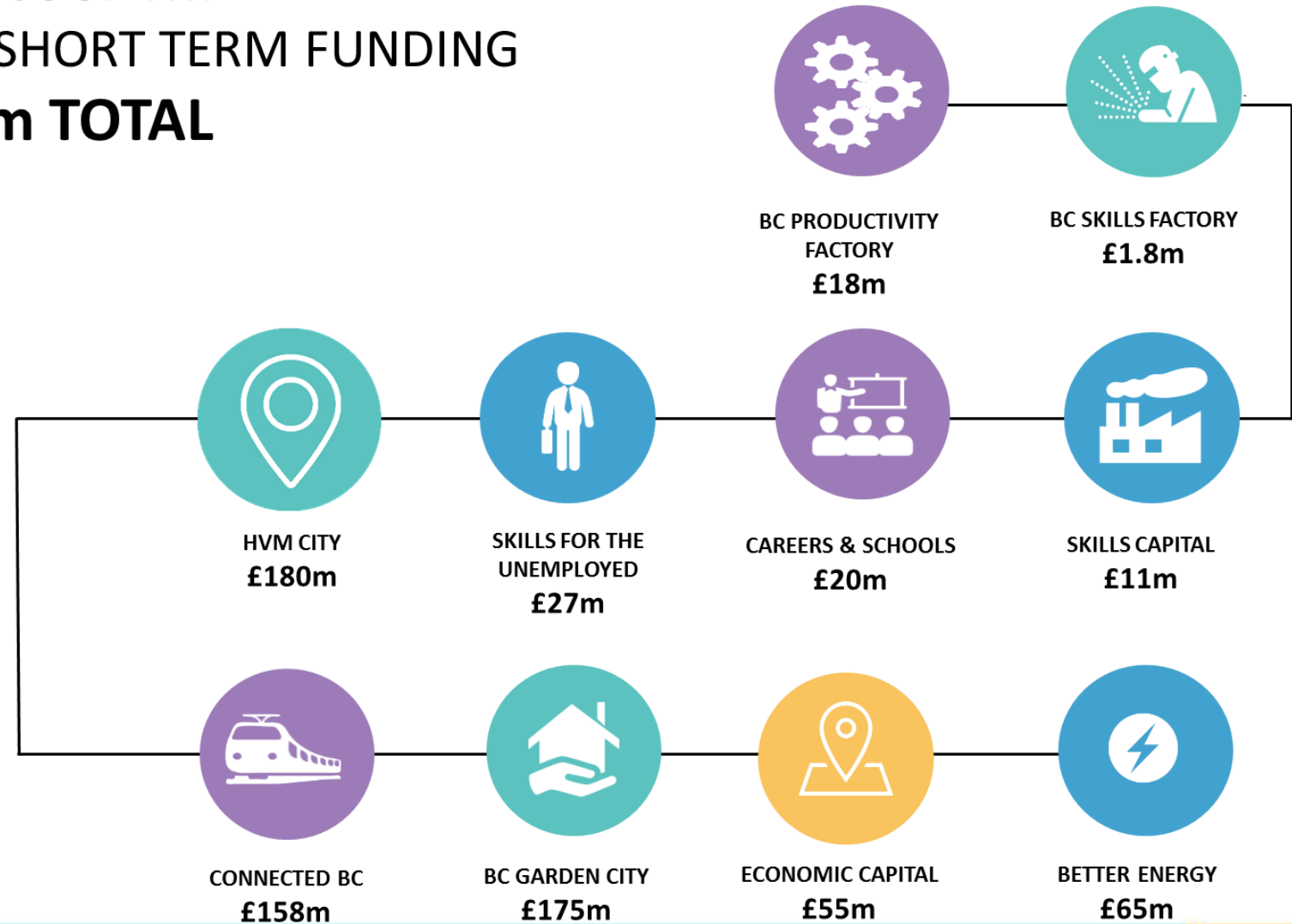


## BLACK COUNTRY-WIDE INVESTMENT £1.8BN TOTAL



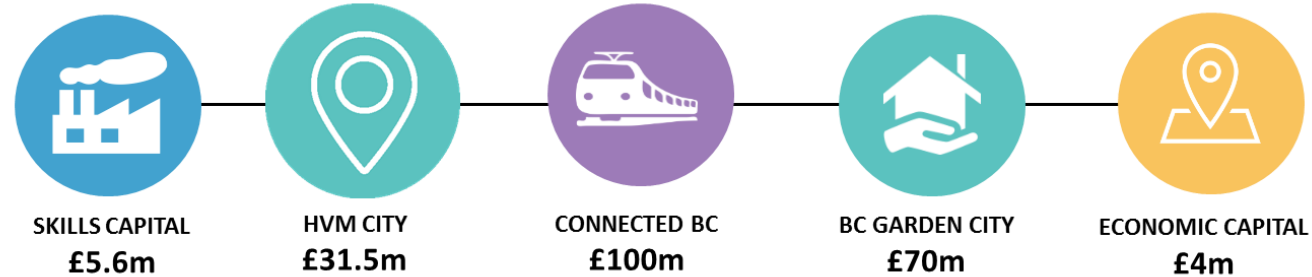
# LIP Investment

## BLACK COUNTRY LIP PROPOSITION – SHORT TERM FUNDING **£710m TOTAL**



# LIP Investment

## SANDWELL LIP PROPOSITION – SHORT TERM FUNDING **£211M TOTAL**



## BLACK COUNTRY-WIDE INVESTMENT **£120m TOTAL**





# Investment

Black Country LEP

Woods Lane Phase 1



Providence Place



Chances Glassworks



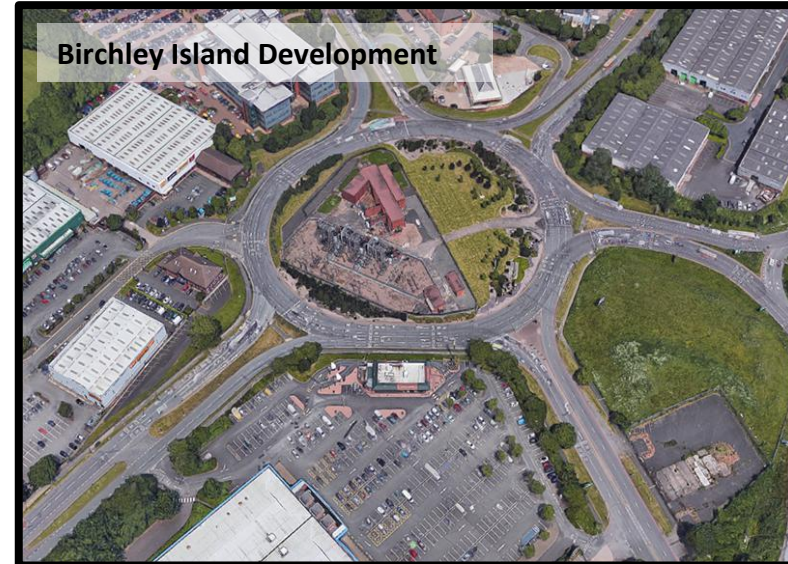
Opus Blueprint



Wednesbury to Brierley Hill Metro Extension



Birchley Island Development



Pope's Lane

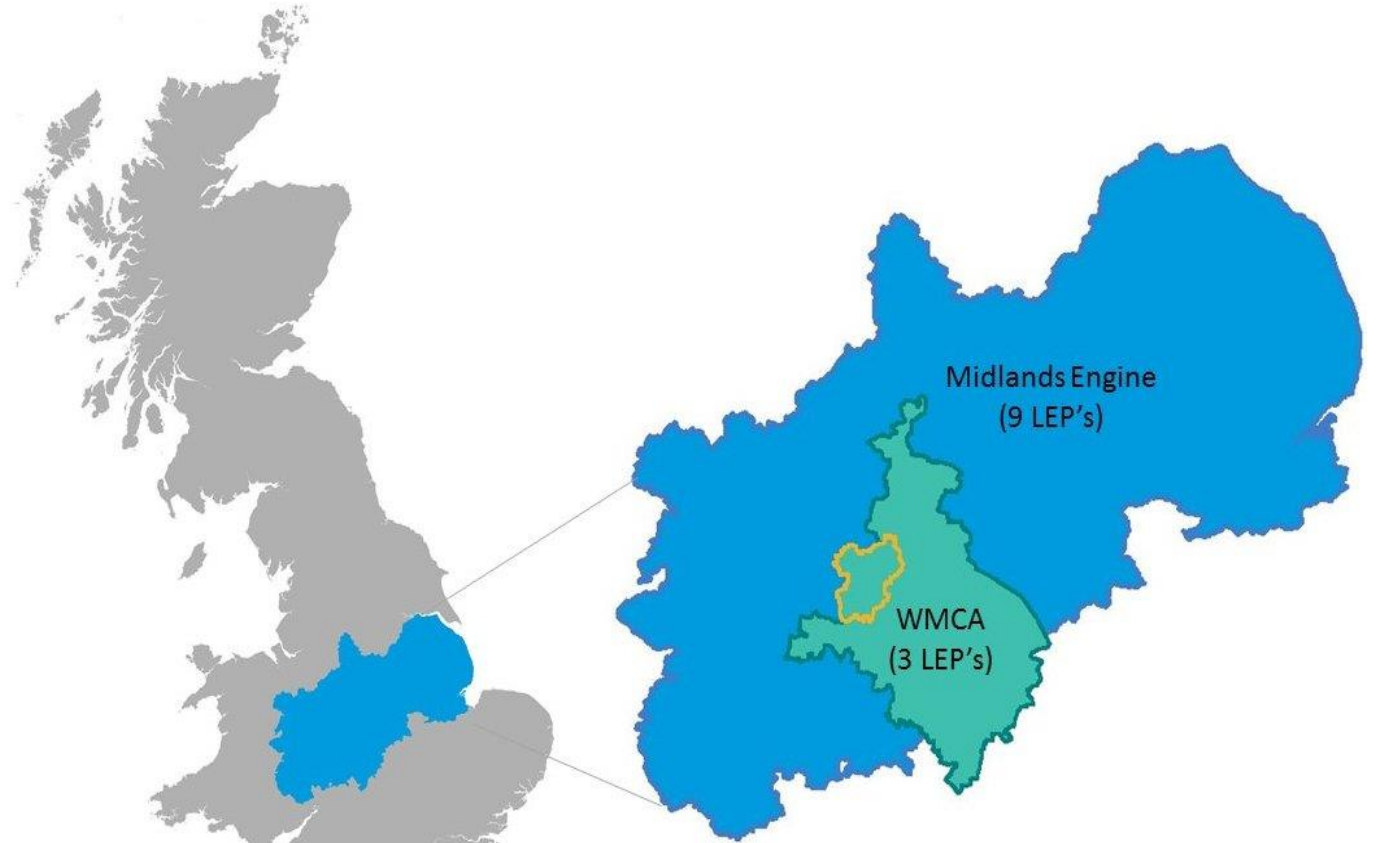
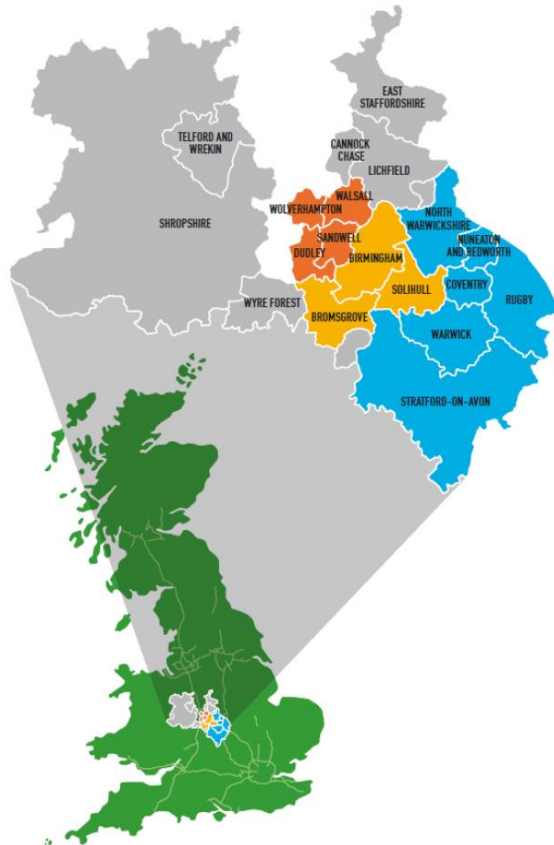




# Cross LEP Collaboration



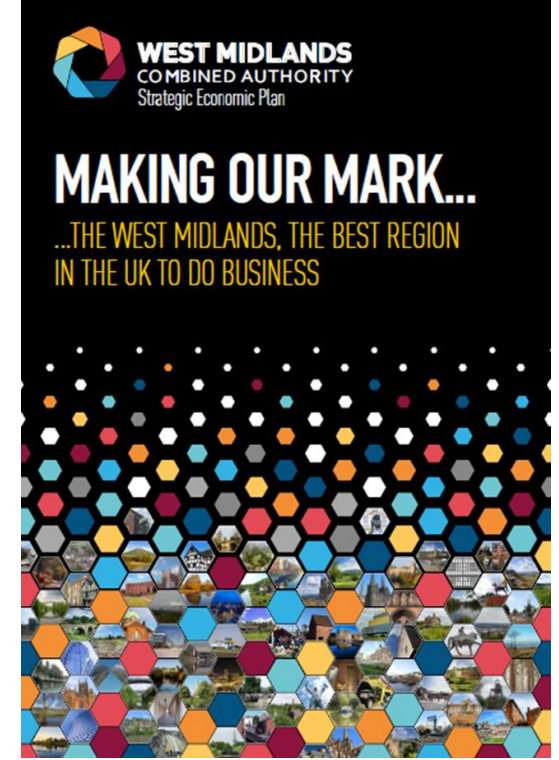
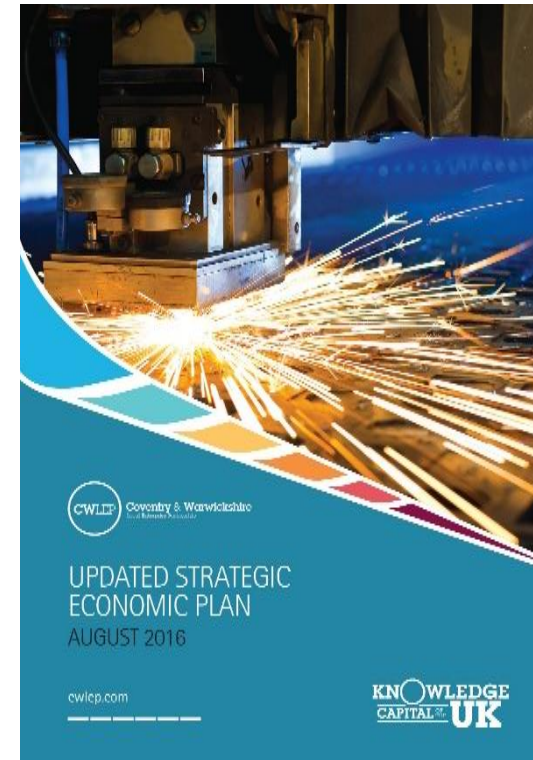
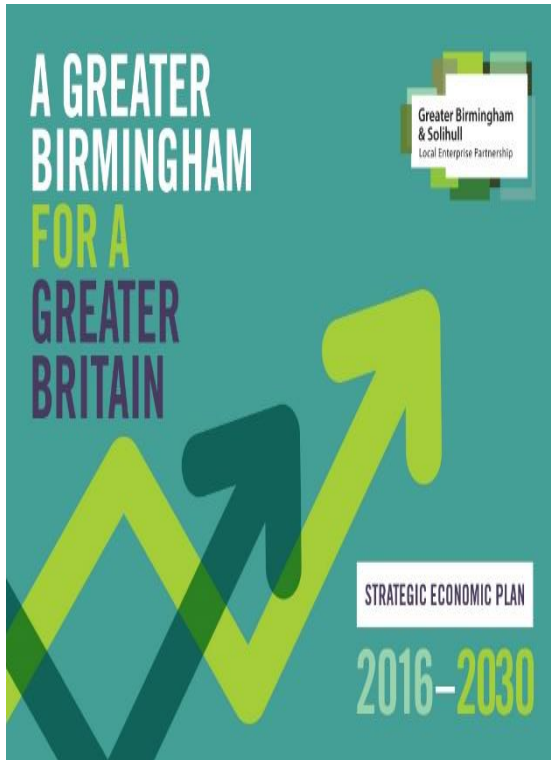
## West Midlands CA 3 LEPs



**MIDLANDS  
ENGINE**  HM Government

# A Family of SEPs – An Economy Plus approach

Black Country LEP



# West Midlands Local Industrial Strategy

## Strategic Opportunities

Smart mobility

Creative content, techniques and technologies

Data driven health and wellbeing

Services

**A distinctive economy** – Creative and innovative, with global supply chain strengths a diverse and young population, well connected, trading and entrepreneurial .  
Unique opportunities ahead in the Commonwealth Games and City of Culture.



**Actions** to unblock barriers to productivity and growth, integrated in places and communities to drive inclusion

## Foundations of productivity – drivers and enablers of growth

People, skills & employment

Ideas / Innovation

Infrastructure & environment

Business environment



**Any Questions?**